



SHARPLIGHT™
the beauty of your success



THE POWER OF FRACTIONAL LASER AT YOUR FINGERTIPS

- ▶ Skin resurfacing
- ▶ Fine lines & wrinkles
- ▶ Pigmented lesions
- ▶ Scars & acne scars
- ▶ Skin laxity

RAPIDPEEL

RAPIDPEEL

The Rapid Peel is a stand alone aesthetic device that uses an Er:YAG 2940 Fractional Laser. The device delivers superior fractional ablative laser beam to treat a range of conditions such as skin resurfacing, scars, pigmented lesions, wrinkles and skin irregularities.

Using the Rapid Peel, you can provide your patients with:

- ▶ Visible results from the 1st treatment
- ▶ Long term results
- ▶ Minimal discomfort
- ▶ A 'Lunch-time' procedure, with no downtime
- ▶ A clinically proven safe and effective treatment
- ▶ Treatment all year round

Rapidly Increase the Profitability of your Practice

The Rapid Peel was designed to help you grow your practice. The business concept behind the device was to create a stand alone device dedicated to a set of conditions. Rapid Peel is a device dedicated to a single technology, enabling a low price threshold to the clinic.

A key advantage of the Rapid Peel over multi-



"I chose SharpLight's Rapid Peel since I feel that there is, and will continue to be, a high demand for Fractional skin resurfacing. I have been incredibly pleased with the variety of other conditions that can be treated with the device. The precise protocols lead to repeatable results that are maintained in the long run, my patients report that the treatment is comfortable."

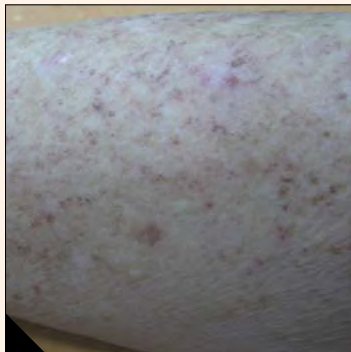
Dr. Hen.H M.D, AML, Israel

technology systems is the maximal use of the device's capabilities. Unlike multi-technology platforms in which several technologies are dormant while you are using your technology of choice, with the Rapid Peel you are using the full potential of the device.

With the Rapid Peel you can achieve quick return on your investment. As the popularity of fractional ablative skin resurfacing is continuously on the rise, you can attract new patients to your practice and offer existing patients a range of new treatments.

The Rapid Peel was designed to seamlessly fit into your practice. It has a chic modern design and its small footprint allows you to easily move it between treatment rooms. Its graphic user interface is highly intuitive and easy to use, which ensures a quick learning curve and fast treatment delivery.

Skin rejuvenation



Before



After

Number of treatments:2

Pigmented lesions



Number of treatments:4

Scars



Number of treatments:12



Er:YAG 2940 Fractional Laser

Contrary to traditional lasers which ablate large areas of the skin, the fractional laser treats a 'fraction' of the treatment area and ablates only select micro-columns. The advantage of this treatment modality is that patients can enjoy the clinical results of ablative laser therapy with shorter downtime and less side effect.

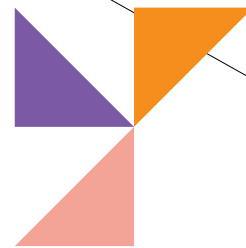
The fractional effect is caused by a laser beam that delivers a powerful 2940nm wavelength. The wavelength is directed through unique optics that split it into multiple beams, known as pixels. The beams are arranged in two matrices- 7x7 (49 pixels) or 9x9 (81 pixels).



Figure: Er:YAG 2940 Fractional Mode: Micro Beams

The cluster of pixels penetrates the epidermis and upper dermis and causes ablation. The depth of penetration can be controlled and customized to meet clinical needs.

In the 7x7 matrix, the thermal energy delivered to each pixel is greater and therefore the penetration depth is higher than the 9x9 matrix. The 7x7 matrix is therefore better suited for treatment of scars as well as deeper wrinkles, while the 9x9 matrix is used for skin peeling and skin pigmentation. The fractional laser can treat all body areas, but since it is gentler, it is ideal for delicate skin areas such as the chest, décolleté and hands, for all skin types.

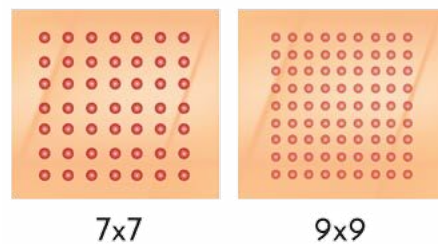


Following treatment, the intact healthy tissue surrounding each pixel point acts as centers of dermal regeneration and expedite the wound healing process by migrating epidermal cells into the wound. This rapid reepithelialization of the target area provides the skin with new epidermal cells that restore its elasticity and firmness. The skin looks younger, smoother and clearer.

Importantly, because of the fractional effect, there is no downtime and patients can immediately resume their daily activities.

Er: YAG 2940 Fractional Laser Hand piece

The Er: YAG 2940 Fractional Laser Handpiece has been ergonomically designed for ease of use of any area of the body, and is particularly optimal for the treatment of facial areas. The handpiece is equipped with both a 7x7 and a 9x9 matrix.



SPECIFICATIONS

- ▶ Energy: up to 1.4J
- ▶ Pulse duration: 1-2 ms
- ▶ Repetition rate: up to 3Hz
- ▶ Spot size: 7x7/9x9mm
- ▶ Cooling system: Water cooling system

ABOUT SHARPLIGHT

SharpLight Technologies Ltd. designs and manufactures non-invasive aesthetic medical solutions for treatment of a broad range of applications such as skin rejuvenation, vascular and pigmented lesion removal, body contouring, hair removal and more. The company is an expert in the aesthetic field and its proprietary DPC™ and Vermaderm technologies have redefined treatment effectiveness, comfort and speed. SharpLight offers a full line of stand-alone and multi-technology aesthetic systems powered by DPC, RF, VermaDerm and Laser technologies.

For more information visit SharpLight.com



SHARPLIGHT

SharpLight Technologies Ltd.
8601 Jane Street, Unit 6, Vaughan ON, L4K 5N9
www.sharplight.com | Tel: 1 (866) 513-7797 | info@sharplight.com