



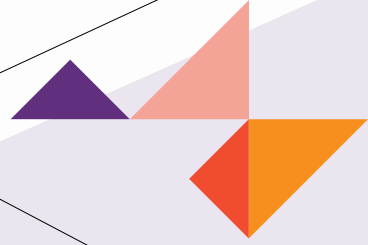
SHARPLIGHT™
the beauty of your success

PERMANENT TATTOO REMOVAL WITH Q SWITCH LASER TECHNOLOGY

▶ Tatoon removal



RAPIDQS



"I highly recommend the Rapid QS for tattoo removal. I have been using the system for several months now and have been impressed by the power, precision and ease of use of the device. I have been able to treat both old and new tattoos and the results are excellent."

Dr. Chen B. D.M.D., AML Israel

RAPIDQS

Advancements in laser technology have revolutionized the world of tattoo removal and have provided patients with 'tattoo regret' a safe and effective method to permanently remove unwanted tattoos, without the risk of scarring or hypopigmentation. The Rapid QS, is a single-technology aesthetic device based on Q-Switched Nd: YAG laser technology dedicated to tattoo removal. The Q-Switched laser has established itself as the gold-standard in tattoo removal, and using the Rapid QS you can safely and effectively treat tattoos in any color of the spectrum.

Rapid QS benefits:

- ▶ **Removal of tattoos across the color spectrum**
- ▶ **Reproducible results on all skin types**
- ▶ **Fast and safe tattoo removal**
- ▶ **Visible improvement from the very 1st treatment**

Rapidly Return your Investment

The Rapid QS was designed to help you capitalize on the growing tattoo removal market. By offering state-of-the-art tattoo removal treatments, you can easily attract new patients to your practice and offer existing patients new alternatives.

The advantage of the Rapid QS is that it is a singular-technology device. As such, its price is more attractive compared to multiple-technology solutions. The Rapid QS is ideal for practices that require stand-alone QS laser capabilities or those that are starting off in the aesthetic field and want to gradually grow their business.

The singular-technology device means that no capabilities go unused. As opposed to multiple-technology solutions in which several technologies are dormant while you use your technology of choice, with the Rapid QS, the full capacity of the system is used at all times.

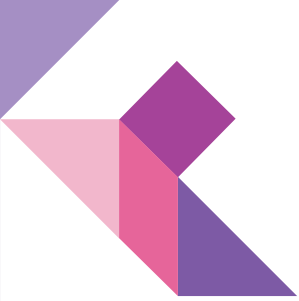
The Rapid QS was designed to seamlessly fit into your practice. Its modern and chic design and small footprint means you can easily transfer it between treatment rooms. Furthermore, the system has a highly intuitive and easy to use graphic user interface that reduces the learning curve and ensures fast treatment delivery.

Q-Switched laser



The Q-Switched laser is characterized by its ability to deliver peak power within a short pulse duration. The electro-optic Q-Switched acts as a high-speed shutter which stores the energy between the pulses. This enables the laser to deliver a high power output of 200 megawatts in ultra-short 5-20 nanosecond pulse widths.

The energy is rapidly absorbed by the target chromophores - the tattoo ink - and causes a mechanical photo-acoustic effect. As a result, the the pigment is disintegrated causing the tattoo to fade, without damaging surrounding tissue or the epidermal layer. The body's natural lymphatic and blood mechanisms then clear the released ink particles.

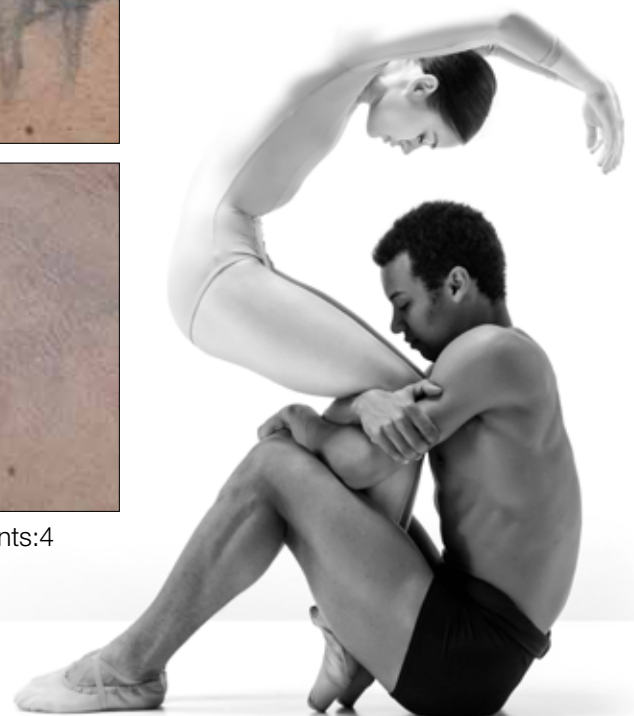
The Q-Switched laser has dual wavelength capabilities of 1064nm and 532nm, and you can easily switch between them using the KTP adaptor. The 1064nm wavelength best targets dark tattoos in the color range of dark blacks, purples and blues. For brighter tattoos that have yellows, reds, oranges and other light colors, the 532nm is recommended.



Principles of wavelength selection

Indication	Wavelength	Pulse Energy [J/Pulse]	Pulse Repetition Rate	Spot Size
Dark Tattoo Removal (Black and dark colors) 	1064 nm	0.2 to 0.8	1-3 Hz	2,4,6 mm
Bright Tattoo Removal (Yellow, red, and light colors) 	532/1064 nm (KTP)	0.2 to 0.8	1-3 Hz	2,4,6 mm

Tattoo removal



SPECIFICATIONS

- ▶ Hand piece: QS
- ▶ Energy: up to 0.8J
- ▶ Pulse duration: 10 nsec
- ▶ Repetition rate: up to 3Hz
- ▶ Wavelength: 532/1064nm
- ▶ Spot size: 2/4/6mm
- ▶ Cooling system: Water cooling system

ABOUT SHARPLIGHT

SharpLight Technologies Ltd. designs and manufactures non-invasive aesthetic medical solutions for treatment of a broad range of applications such as skin rejuvenation, vascular and pigmented lesion removal, body contouring, hair removal and more. The company is an expert in the aesthetic field and its proprietary DPC™, DPC™ Flow and Vermaderm™ technologies have redefined treatment effectiveness, comfort and speed. SharpLight offers a full line of stand-alone and multi-technology aesthetic systems powered by DPC, RF, DPC Flow and Vermaderm and Laser technology.

For more information visit SharpLightTech.com



SHARPLIGHT

SharpLight Technologies Ltd.
33 Lazarov St. Rishon Le Zion 7565435, Israel
T: +972.3.961.1969 | F: +972.3.952.8890 | E: info@sharplighttech.com